



Highbay EcoMax G2

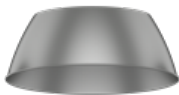
- Cost effective highbay solution
- Elegant slim design
- Up to 60% energy saving compared to HID solutions
- Reflectors, bracket and IP68 connector available as accessory



Specifications

Item Code	Item Description	Equivalent to (W)	Power (W)	Lumen	Efficacy (lm/W)	CCT (K)	Weight (kg/pc)
545001047600	LEDHighbay-E2 120W-840-W	HID 400W	120	15600	130	4000	2.46

Accessories



545098006200
LEDHighbay-E2 Reflector-Rd507



545098006000
LEDHighbay-E2 Bracket-L249



543098021900
LEDFixture-IP68-Connector-Kit-3

Packaging Information

Item		Box			
Item Code	Item Description	Dimensions (mm) (LxWxH)	Gross Weight (kg)	EAN	pc/box
543098021900	LEDFixture-IP68-Connector-Kit-3	265x245x205	3.00	6941497708991	1
545001047600	LEDHighbay-E2 120W-840-W	397x397x122	2.80	6941497758088	1
545098006000	LEDHighbay-E2 Bracket-L249	249x165x63	0.56	6941497757937	1
545098006200	LEDHighbay-E2 Reflector-Rd507	507x507x189	0.73	6941497757920	1

Technical Specifications

Lifetime (L70)	50,000 h
Lifetime (L80)	30,000 h
On-/Off-cycles	100,000
Colour consistency (SDCM)	4
Dimmability	On-Off
Beam angle	90°
Finishing	Grey Pantone 417U
Colour rendering index CRI	≥ 80
Degree of protection (IP)	IP65
Impact strength	IK08
Protection class	I
Risk group (EN 62471)	RG1
With control gear	Yes
Glow wire test	850°C
Driver failure rate (at 5,000 hrs)	1%
Power factor	≥ 0.9
Surge protection	4 kV

Electrical Supply

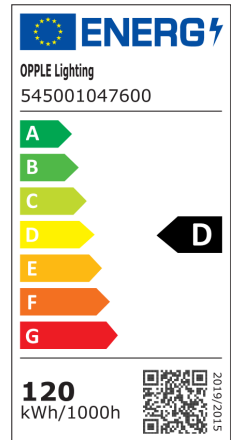
Frequency	50/60 Hz
Nominal voltage	220-240 V AC
DC input voltage	No
230V Cable length	1 m

Mechanical Properties

Material housing	Aluminium
Optical material	Polycarbonate
Cover material	Polycarbonate

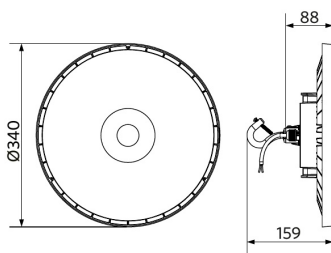
Ambient Conditions

Operating temperature	-30-+50°C
Application temperature	+25°C
Storage environment	-30-+50°C

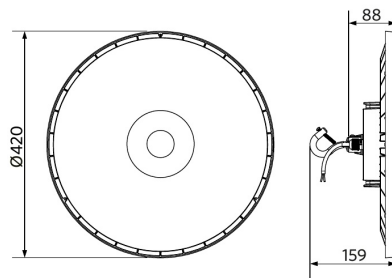


Dimensional Drawing (mm)

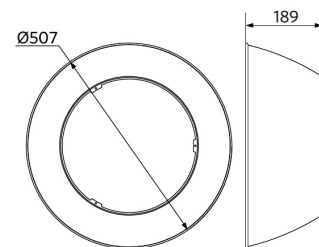
LEDHighbay-E2
120W & 150W



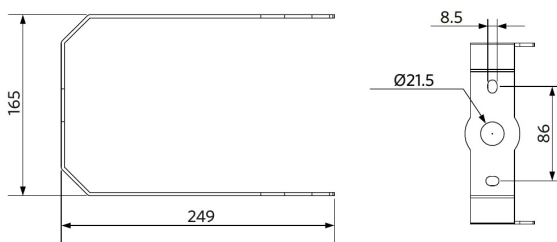
LEDHighbay-E2
200W & 240W



LEDHighbay-E2 Reflector-Rd507



LEDHighbay-E2 Bracket-L249



Photometric Data

